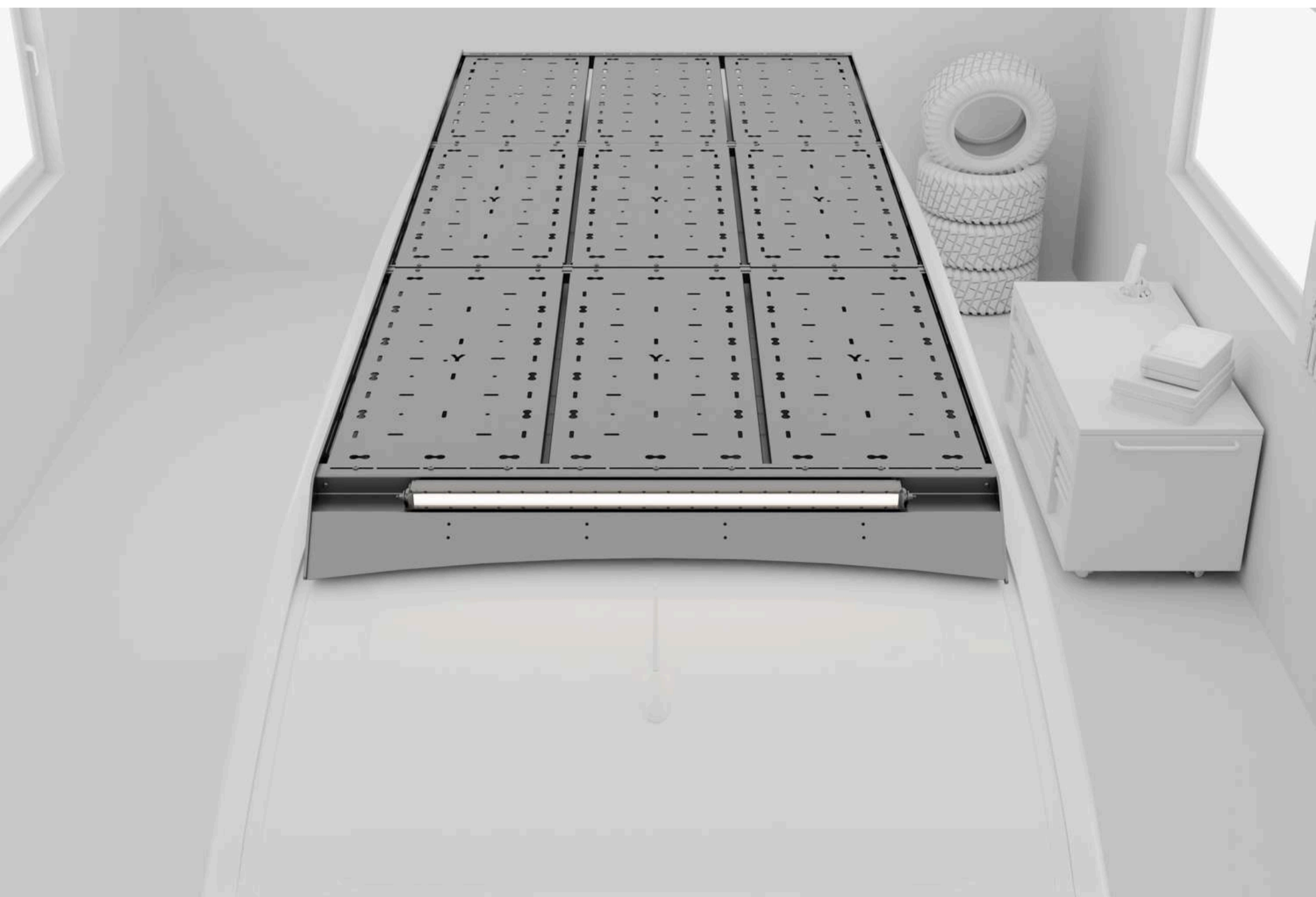


YAKKT

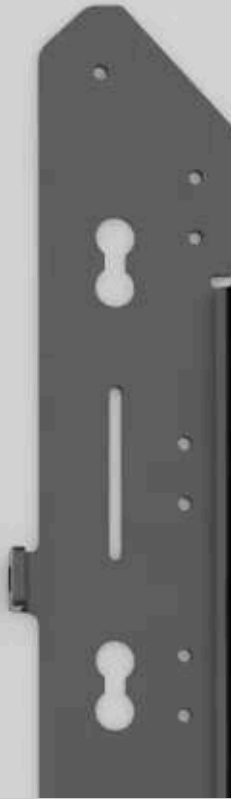
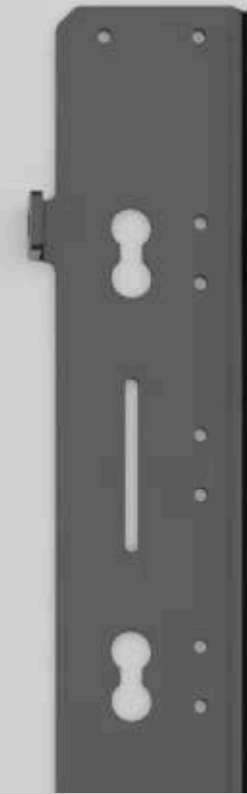
@yakkt.co

CRAFTER TGE

PRO RACK INSTALL GUIDE



PARTS LIST



MWB-C-RR-CORE CONTENTS

- MWB-C-RR FITTING KIT
- 1x NS FRONT SIDE RAIL
- 1x OS FRONT SIDE RAIL
- 1x NS REAR SIDE RAIL
- 1x OS REAR SIDE RAIL
- 1x SLIM FRONT FAIRING
- 1x REAR FAIRING
- 3x ALUMINIUM CROSSBARS

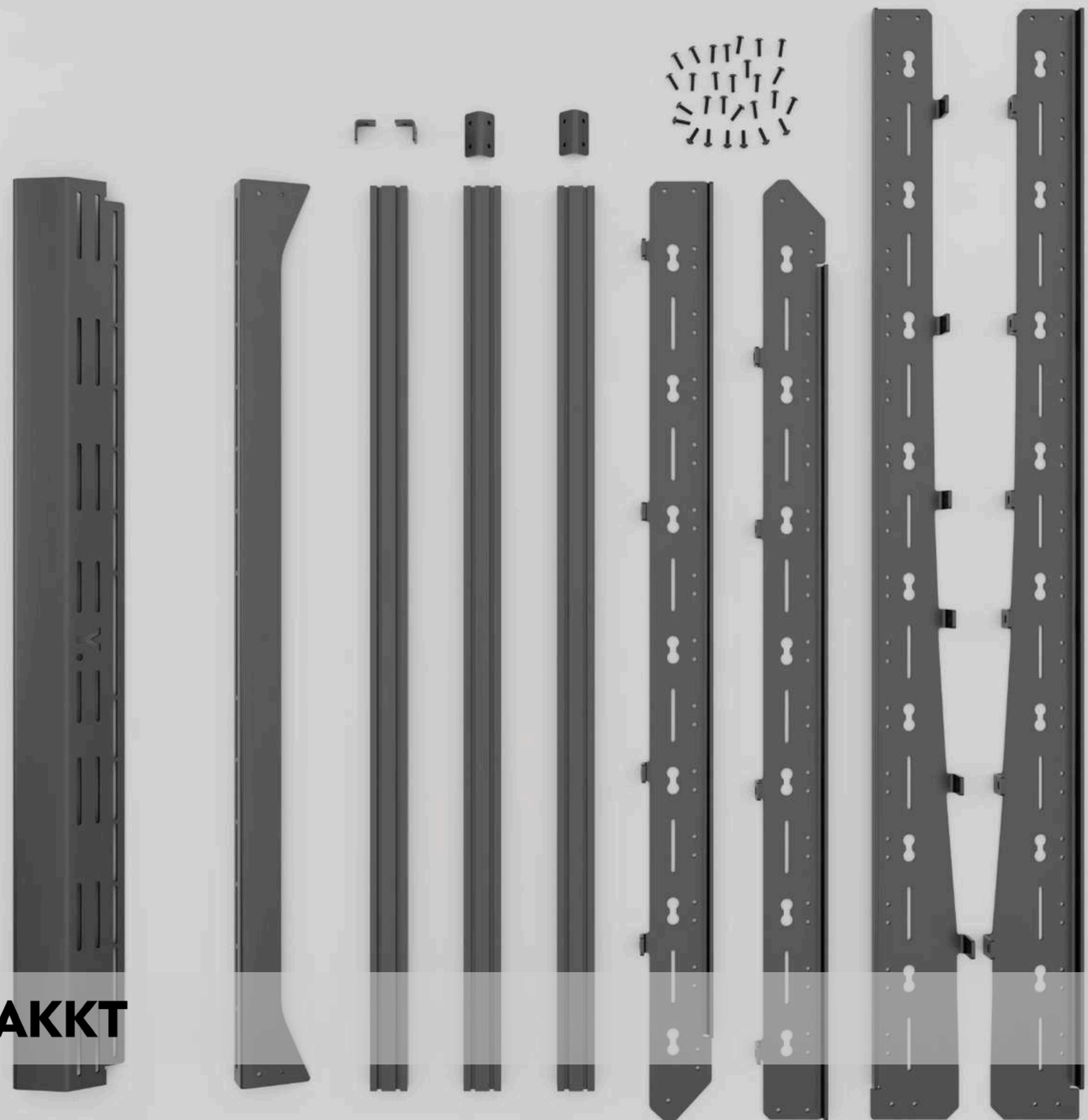
FITTING KIT CONTENTS

- 2x UNIV 4 BRACKETS
- 2x UNIV 2 BRACKETS
- 2x UNIV RAIL CONNECTOR
- 20x RUBBER SPACERS

HARDWARE BAG

- Univ 4 x 2 Hardware Bag
- Univ 2 x 2 Hardware Bag
- Univ Connector x 2 Hardware Bag
- Front Fairing Bag (x8)
- Crossbars (x3)

YAKKT



TASK 1

GATHER TOOLS

Grab:

- A mate (to hold the spanner under the van)
- A ladder
- Heatgun
- Flat headed scewdriver or preferably a plastic trim removal tool
- M8/13mm socket/spanner
- M6/10mm socket/spanner
- Impact Driver
- H5 HEX Drive
- 4mm HEX Drive



TASK 2

REMOVE PLASTIC CAPS

- Use a heatgun to loosen the glue, taking care not to overheat and damage the paint
- Use a flathead screw driver or trim removal tool to gently release the plastic caps, revealing 20x M8 holes (MWB), 26x (LWB).



YAKKT



TASK 3

START FITTING YOUR SIDE RAILS



1) Offer up your side rails. The order you do this does not matter. Here, we are starting with the back section

2) Using the fixings provided in the 'side rails' fixing kit and the supplied rubber spacers, bolt the side rails through the vehicle loosely, in the following order:

- 1) M8 Stainless Flanged 25mm Bolt
- 2) Side Rail
- 3) EPDM Rubber Spacer
- 4) Vehicle Roof
- 5) M8 Stainless Washer
- 6) M8 Nut

Tighten so the rail is secure, but there's still some play.



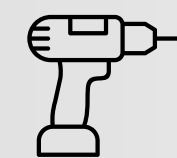
YAKKT



TASK 4

FIT RAIL CONNECTORS

- 1) Gather the 2x (MWB) or 4x (LWB) supplied univ rail connectors and the supplied univ rail connector fitting bag.
- 2) Bolt the side rails together tightly, with the aim of making the side rails as flush and one piece as possible.



TASK 4

FIT REAR FAIRING

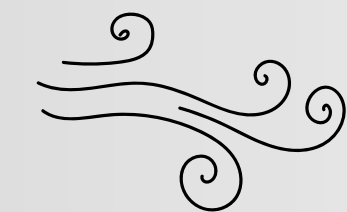
1) Using the UNIV-4 Brackets and UNIV-4 Fixing Kit Bag, pre-install the brackets onto the rear fairing, as shown here.

Order as follows:

- 1) M6 Black Stainless 25mm Bolt
- 2) Rear Fairing
- 3) UNIV-4 Bracket
- 4) M6 Washer
- 5) M6 Nyloc Nut



2) Offer up rear fairing to the side rails and bolt through loosely.



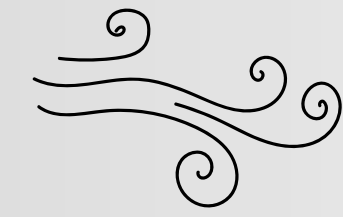
TASK 4

FIT FRONT FAIRING (PRO RACK)

- 1) Feed 8x t-nut inserts (front fairing bag) into the crossbars
- 2) Align with the 8x holes in the front fairing (pro version) and finger-tight bolt through with the supplied 10mm M6 fixings.
- 3) Make sure the crossbar and front fairing are perfectly flush at either end.



YAKKT



TASK 4

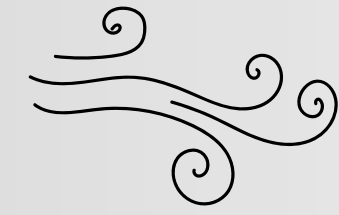
FIT FRONT FAIRING (PRO RACK)

4) Use the supplied 10mm black stainless bolts to bolt the front fairing to the crossbars via the t-nuts.

The front fairing and crossbar will now be one piece, ready to offer onto the roof and bolt through the siderails.



YAKKT



TASK 4

FIT FRONT FAIRING (PRO RACK)



5) Offer up the front fairing, making sure to take care to protect your body work. This is a job for two people.



6) Loosely the the side rails through the front fairing using the bolts supplied in the 'crossbars' pack.

Make sure the fairing follows the curvature of the side rail & tighten up.



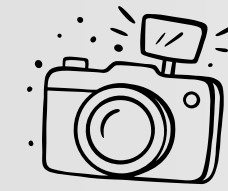
TASK 5

FINAL TIGHTEN + CROSSBARS.

You now have everything loosely fitted to your van. To finish:

- a) square the side rails by eliminating any play and push them as far to the front of the vehicle as possible
- b) you can now position your crossbars, bolt these tight once you've determined the location
- c) perform a final tighten of the front fairing and rear fairing
- d) perform a final tighten of the side rails to the chassis

YAKKT



TASK 6

ADMIRE YOUR HANDY WORK!

Congratulations! You've just fitted your new YAKKT rack. Stand by and admire your handy work.

You can now add;

Deck Panels

Solar Panels

Awning

Roof Tent

Any other accessory you can think of..

YAKKT

YAKKT

@yakkt_co

Contact

Unit 7 & 8
Eastriggs
DG126TF

info@yakkt.com
+447871319441

Director - Jamie Nicholson

